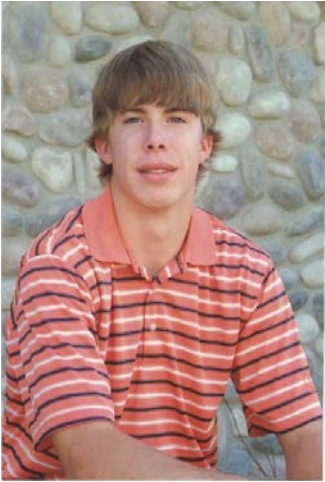


The WBMA Educational Link Scholarship Fund

2010 Scholarship Recipients



Connor Currie graduated from Sandpoint High School in Sandpoint, Idaho and will be attending the University of Idaho this fall to study business with a music minor.

Connor was active in his Jazz and Symphonic band, pep band, math club and chess club. He also was a member of the

soccer and golf teams. Connor was a part of the Kootenai Community Youth Group for many years.

Connor's long term goals include continuing on for his Master's degree in Business and possibly law.



Sarah Sakai is currently attending the University of Idaho majoring in Business with a minor in Journalism.



Kathryn Hindman recently graduated from Baker High School in Baker City, Oregon. She plans to attend Brigham Young University to study psychology with an emphasis in child development.

Kathryn was involved in Jazz and Symphonic band, Future Business

Leaders of America and the National Honor Society for her school.

She also was active in her Church, community and captain for a Relay for Life Team.

Ava Goepfert graduated from James T. Hutchinson High School in Fairbanks, Alaska. She will be attending Gustavus Adolphus College in Minnesota to study communications be a part of a new media wave.

Ava participated in many activities such as the broadcasting club, yearbook, school newspaper, Academic Decathlon and Science Olympiad. She also was involved in Student Council, served as National Honor Society President and Senior Class President.

The WBMA Educational Link Scholarship Fund was established by the members of Western Building Material Association for the purpose of assisting in providing higher education opportunities for children of members' employees, and the employees themselves. The Link Fund is in its 18th year and recently awarded four \$1,250 scholarships to the above recipients. Scholarship amounts are determined by the interest income generated from the fund each year. The caliber of individuals applying for the scholarships is inspiring, reinforcing the fact that there continues to be a lot of very fine people in our industry. This perpetual fund can help see that these individuals develop into solid leaders of tomorrow by affording them the opportunity for higher education. The Link Fund receives its growth from the raffle held during WBMA's Annual Convention and other company contributions received throughout the year. The Link Fund has also grown through memorials as industry members remember their colleagues and loved ones. Your contribution qualifies as tax deductible to the non-profit WBMA Link Scholarship Fund, incorporated in the State of Washington. Contributions can be sent to the WBMA office at PO Box 1699 - Olympia, Washington, 98507.